

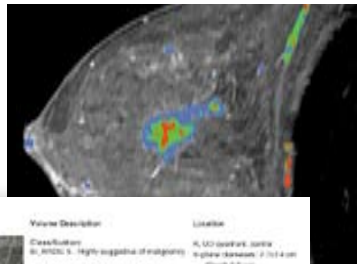


Technology

Accurate, Automated Analysis and Reporting, Compatible and Flexible Architecture

Automated Analysis and Reporting

CADstream’s automated processing of MRI studies helps standardize the way studies are analyzed and reported, enhancing efficiency in women’s imaging programs. Automated processing includes detection and removal of cardiac artifact, image registration to correct for patient movement, subtraction images, multiplanar reformats, Angiogenesis Maps and curves, maximum intensity projections (MIPs) and volume summaries.



Right breast	Volume 1	Volume Description	Location
	Classification: BI-RADS 4. Highly suggestive of malignancy.	BI-RADS Summary: Round-shaped mass, irregular margin, faint peripheral enhancement, non-mass-like enhancement, internal enhancement.	4.00 cm (ant-post), 4.00 cm (super-inferior), 2.7 x 4.0 cm (Cr-CC), 5.0 cm (Transverse), 4.0 cm (Superior-inferior), 2.7 cm (Ant-post), 4.0 cm (Cr-CC)

Once the radiologist has interpreted a study and selected the lesion(s) of interest, CADstream automatically creates a report (Portfolio) with reference images, size and location information and radiologist-assigned BI-RADS® Atlas classification for each lesion.

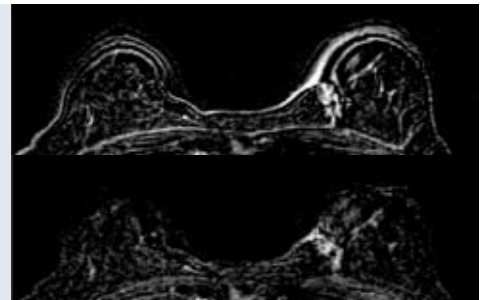
Proven Technology

CADstream is the standard in CAD for breast MRI, automating MR image analysis and reporting with compatibility and a flexible workflow-based architecture. CADstream provides a more efficient, accurate and standardized method for analyzing and reporting MRI studies.

CADstream is supported by extensive literature, clinically validated by thousands of physician users, compliant with the ACR BI-RADS® and compatible with all MRI equipment.

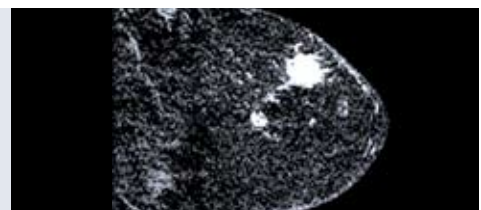
Image Registration

CADstream uses a motion correction algorithm that was developed specifically for MRI and incorporates cardiac artifact detection. Cardiac artifact removal ensures optimized registration by removing cardiac artifact from the registration process. With CADstream, registration is efficient and has been demonstrated to reduce artifact in subtraction images.



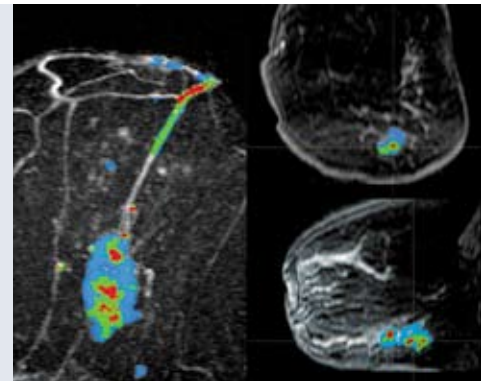
Subtraction Images

CADstream compares different series and bright areas that may indicate abnormal tissue.



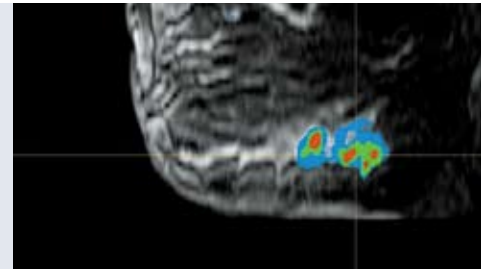
Multiplanar Reformatting (MPR)

MPR allows the user to view studies in multiple planes (sagittal, axial, coronal) in order to localize lesions and their relationship to other anatomy. Additionally, multiplanar reformats can automatically be created for the left or right breast only, including cranial-caudal and medial-lateral orientations.



Angiogenesis Maps and Curves

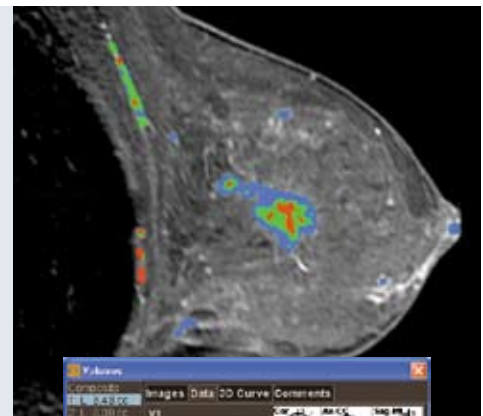
CADstream's Angiogenesis Maps and curves, developed in accordance with the BI-RADS® Atlas, promote standardization and use all of the ACR-recommended methods for assessment.



Volume Summaries

CADstream automatically creates lesion (volume) characterizations with 3D renderings and data calculations for each lesion within the study. Lesion characterization includes:

- 3D renderings of volumes
- Lesion diameter measurements in compliance with WHO and RECIST guidelines
- Location information
- Automatic detection of the most suspicious curve within the volume
- Morphology characterizations
- BI-RADS® Atlas lexicon for lesion classification

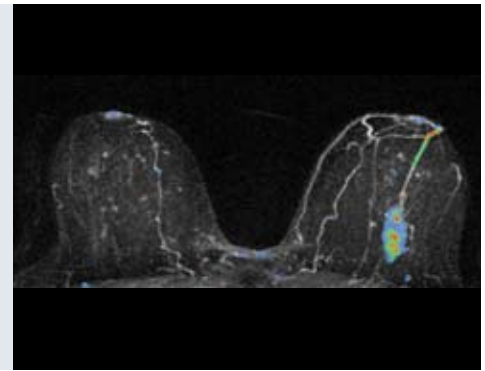


Proven Compatibility

CADstream is compatible with all MRI systems and is DICOM 3.0 compliant. Users can send, query-retrieve, archive and print DICOM data. CADstream-processed images can be viewed using CADalyst™, CADstream's network-based user interface, or sent automatically to PACS for viewing and archiving. Users have the option to archive all data, original data only or some subset of the data to PACS, network drive or CD/DVD. Additionally, the CADstream Portfolio and process list summary can be archived along with the original data.

Maximum Intensity Projections (MIPs)

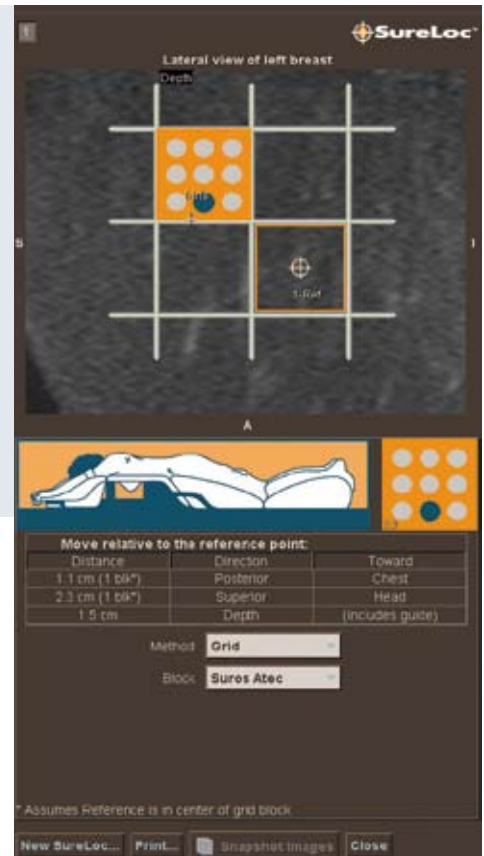
MIPs provide interactive 3D viewing capability to help localize lesions and their relationship to other anatomy. CADstream can automatically create MIPs for the entire study or left or right breast only, including cranial-caudal and medial-lateral orientations. Also, CADstream allows users to create a number of customized MIPs – slab, temporal and oblique – all of which can include AngioMap overlays. Cardiac artifact may be removed from MIPs, providing clearer, unobstructed views of lesions in 3D.



Interventional Guidance: SureLoc™

Using CADstream and SureLoc, radiologists can more efficiently calculate coordinates for MR-guided interventions at the point of procedure. SureLoc reports needle position (insertion location, depth and needle angle) for both grid and pillar methods in real time and displays images and needle position in the patient's orientation.

Additionally, SureLoc is compatible with interventional breast coils and vacuum-assisted biopsy systems, and is available at the point of procedure via any networked PC.



Flexible Workflow-Based Architecture



As a workflow-based system, CADstream is designed for any program infrastructure, integrating with existing equipment and providing access

to studies everywhere on the network. Additionally, CADstream can be customized to fit any workflow and economic scenario. Whether beginning or expanding a breast MR program, CADstream scales to fit your needs.

CADstream is a centralized system located on the customer's network. Physicians in multiple locations can securely access CADstream from existing computers through CADalyst.



Flexible, Workflow-Based Architecture



More Information

For additional information and materials about CADstream, fill out a photocopy of the following form and fax or mail to Confirma.

Fax: 877/811-2376

Confirma, Inc.
c/o Marketing Department
11040 Main Street, Suite 100
Bellevue, WA 98004

Yes, please send more information about CADstream.

Name _____

Institution _____

Street Address _____

City _____

State _____ Zip code _____

Telephone _____

Fax _____

Email _____

Confirma™

Global Headquarters

11040 Main St., Suite 100, Bellevue, WA 98004-6368, USA
toll-free: 877/811-2356 local: 425/691-1600
fax: 425/691-1644 email: information@confirma.com
www.confirma.com

Confirma Europe GmbH

Gustav-Meyer-Allee 25, D-13355 Berlin, Germany
tel: +49 30 46307630
fax: +49 30 46307632
email: europe@confirma.com